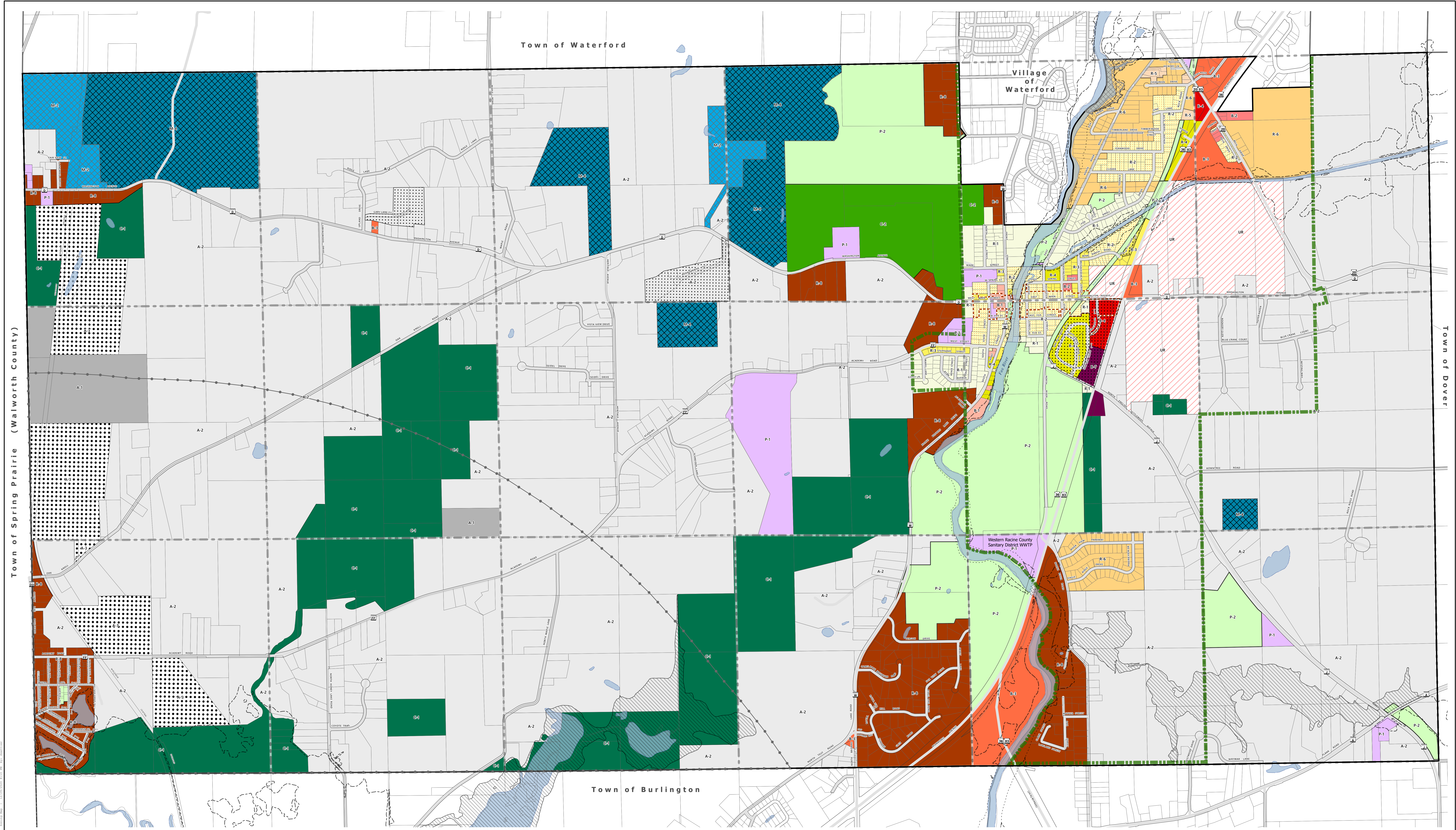


ZONING MAP

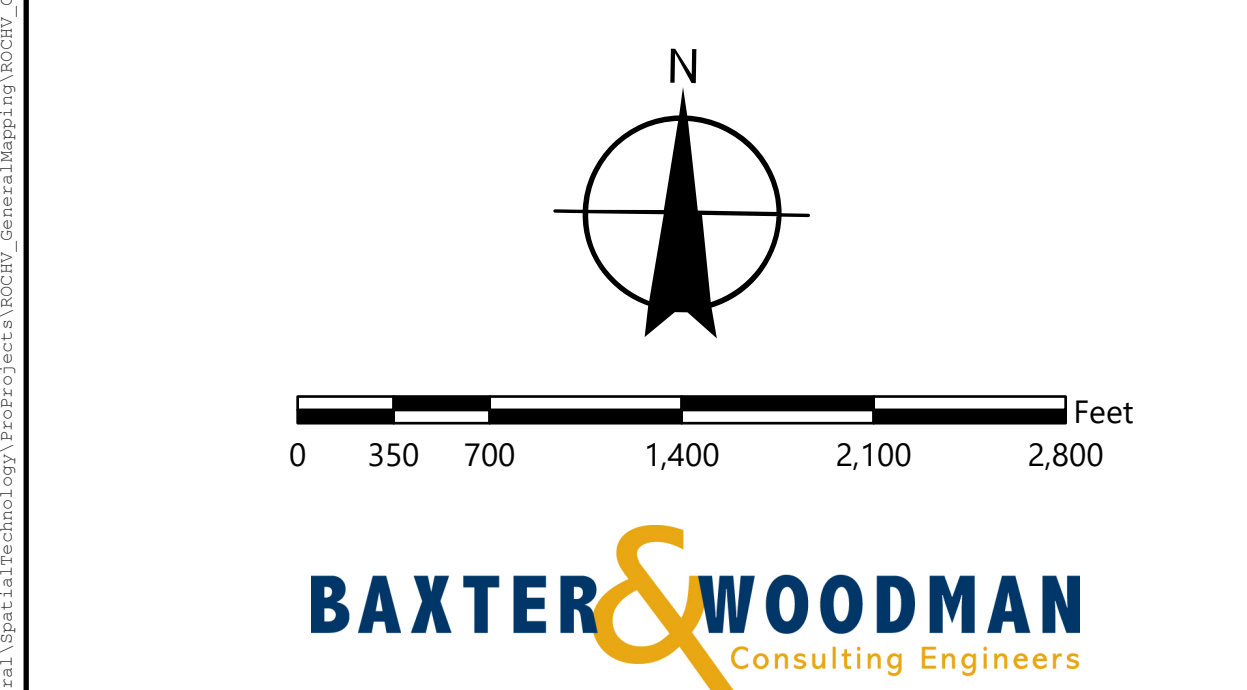
2020

Village of Rochester

Racine County, Wisconsin



Source(s): Base data from Racine County GIS, 2020. Spatial Reference: NAD 1983 (2011) StatePlane Wisconsin South FIPS 4883



- R-1 Single Family Residential District, 90-foot, 12,000 SF
- R-2 Single Family Residential, 66-foot, 10,000 SF
- R-3 One and Two Family Residential, 10,000 SF
- R-4 Multiple-Family Residential District, 120-foot, 18,000 SF
- R-5 Two Family Residential District, 100-foot, 10,000 SF
- R-6 Suburban Residential, 100-foot, 20,000 SF
- R-8 Suburban Residential (Unsewered) 150-foot, 40,000 SF
- B-1 Central Business District

- ### ZONING DISTRICTS
- B-2 Limited Business District
 - B-3 General Business District
 - B-4 Highway Business District
 - B-5 Mixed Use Business District
 - B-7 Mixed Use Business District
 - M-2 General Industrial District
 - M-4 Quarrying District
 - A-1 General Farming District
 - A-2 General Farming and Residential District
 - A-3 General Farming - Holding District
 - C-1 Resource Conservation District
 - C-2 Upland Resource Conservation District
 - P-1 Institutional Park District
 - P-2 Recreational Park District
 - Urban Reserve District (UR)

- ### ZONING OVERLAYS
- Waterford Dam Hydraulic Shadow
 - Historic Preservation Overlay (HPO)
 - Planned Unit Development (PUD)
 - Airport Affected Area (Burlington Airport)
 - Sewage District Boundary
 - General Floodplain District (GFP) (Unnumbered Zone A)
 - Flood Fringe District (FFO) (Zone AE)
 - Floodway District Line (F-1)

CERTIFICATION OF ORIGINAL ZONING MAP

I, THE UNDERSIGNED, VILLAGE PRESIDENT OF THE VILLAGE OF ROCHESTER, RACINE COUNTY, WISCONSIN, DO HEREBY CERTIFY THAT THIS "ZONING MAP - VILLAGE OF ROCHESTER, WISCONSIN" WAS ADOPTED AND APPROVED AS PART OF CHAPTER 35, PLANNING AND ZONING OF THE VILLAGE OF ROCHESTER, WISCONSIN MUNICIPAL CODE, ADOPTED ON JUNE 9, 2014, EFFECTIVE JULY 1, 2014, AND IS AVAILABLE IN THE OFFICE OF THE VILLAGE CLERK.

ATTEST:

Betty J. Mory
BETTY MORY
VILLAGE CLERK

Paul Beere
PAUL BEERE
VILLAGE PRESIDENT

MAP UPDATED ON 12-29-2020 PURSUANT TO VILLAGE OF ROCHESTER MUNICIPAL CODE S. 35-30, AS FOLLOWS:

ORDINANCE 2017-1, EFFECTIVE 2-13-2017
 ORDINANCE 2018-2, EFFECTIVE 1-8-2018
 ORDINANCE 2019-4, EFFECTIVE 5-13-2019
 ORDINANCE 2020-2, EFFECTIVE 7-13-2020
 ORDINANCE 2020-6, EFFECTIVE 10-12-2020
 ORDINANCE 2020-8, EFFECTIVE 11-9-2020

See the currently effective official FEMA maps for more information on floodplain and floodway locations, and the Racine County Hydraulic Shadow map for the Waterford dam for more information on the dam shadow location. All adopted by reference in chapter 37.